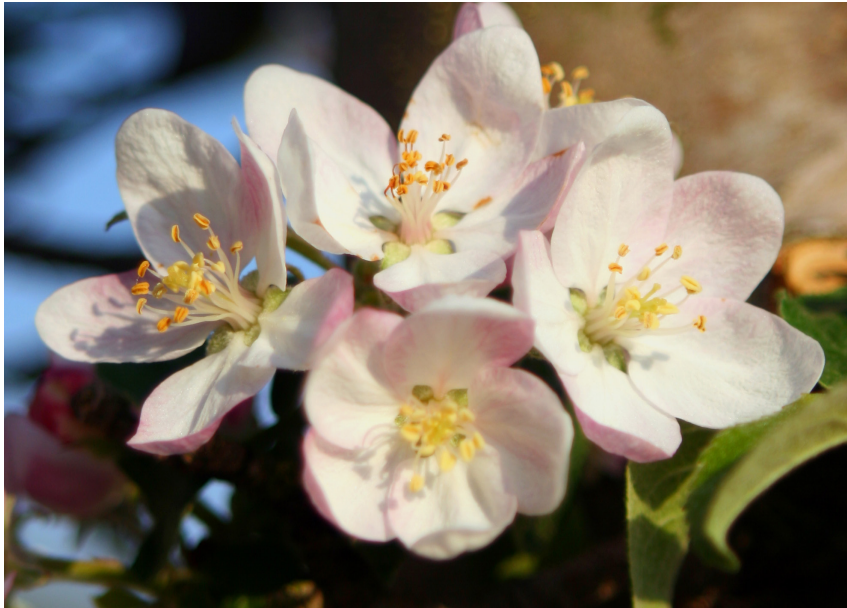
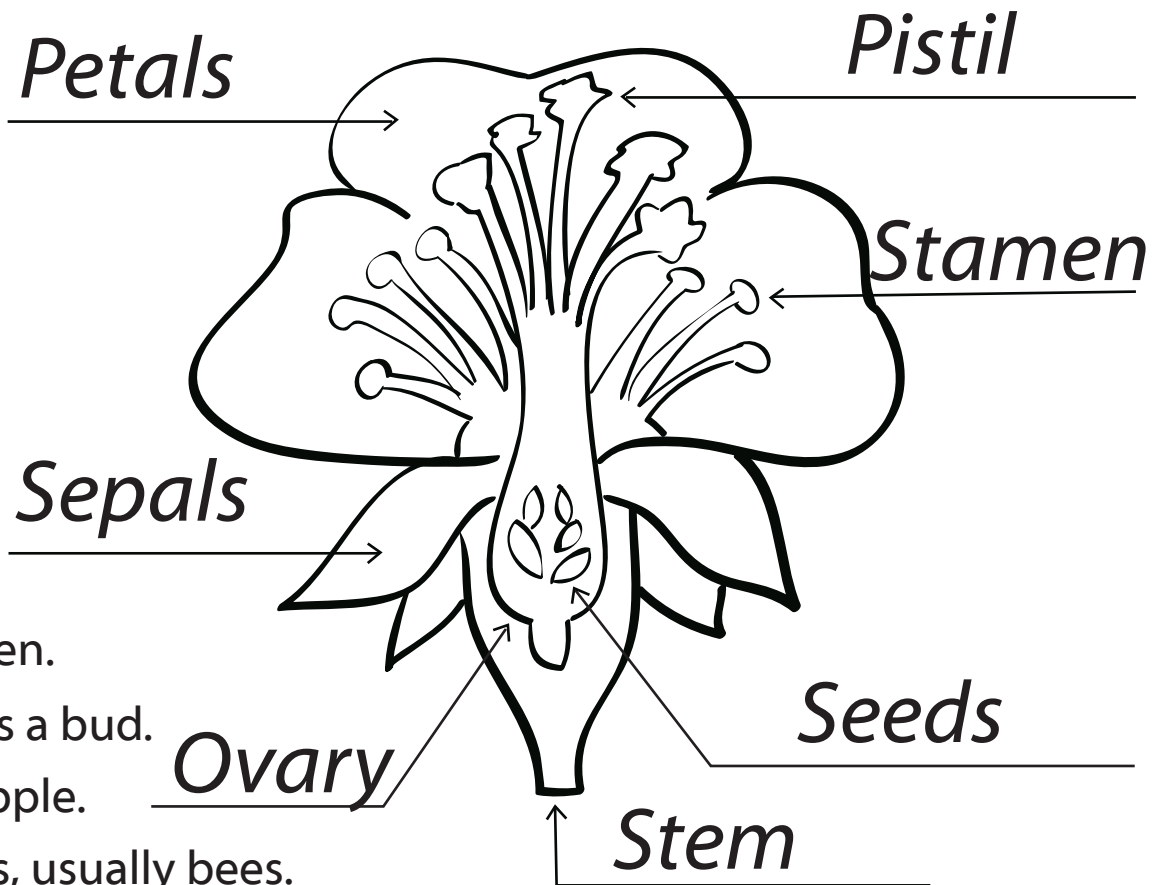


Parts of an apple blossom

Apple flowers have all the parts needed to begin a new apple. Let's see what one looks like if it were cut in half!



Flower Parts



Pistil is the female part of the apple

Stamen is the male part of the apple.

They have *anthers* which make yellow pollen.

Sepals protected the flower when it was a bud.

Ovary becomes the fleshy part of the apple.

Petals attract the insects and pollinators, usually bees.

Seeds: ovules are unfertilized seeds. They will become seeds after the pollination process.

Stem: The stem of the blossom becomes the stem of the apple.